



BREAKFAST/LUNCH INFO

All Students Eat FREE

Location: Cafeteria

Breakfast Served:

7:40a.m.-8:00a.m.

Lunch Served:

1st lunch: KDG-2nd Grade 11:30a.m.-
11:55a.m.

2nd lunch: 3rd-8th Grade 12:05p.m.-
12:30p.m.

*Menus are available at the school
entrance.*

100% FREE

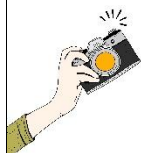
DRESS CODE

We are now allowing spirit wear top and spirit wear sweatpants to be worn Monday – Friday. If you do not have ESLA wear students should be in uniform.

As always:

Thursdays are dress down for \$1.

Fridays are spirit wear day!



SPRING PICTURE DAY

FEBRUARY 11TH

Title One Math Night

January 20th

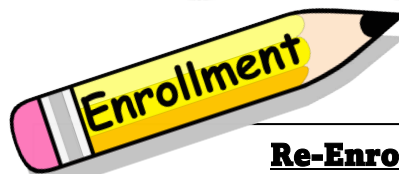
4pm-5pm

Families welcome!



DATES TO REMEMBER

Jan 5th-Feb 6th	NWEA Testing Window
Jan 19th	PD DAY NO STUDENTS
Jan 20th	Title one - Math night
Jan 26th	Re-Enrollment
Feb 11th	Count Day
Feb 11th	Spring picture day
Feb 13th & 16th	Mid-winter Break
Feb 17th	School Resumes
Feb 18th-April 16th	Session 3 Athletic Fac.



Re-Enrollment

For the 26-27 school year for current student re-enrollment will begin January 26th – February 9th. Re-enrollment forms will be coming home soon!

PRE K FOR ALL!

Join our GSRP classroom! For any child that is 4 before December 2025

Spirit Wear

Shirts - \$18/Sweatshirts - \$30

Sweatpants - \$26 for child/\$28 for adult

Students can wear spirit shirts every Friday with jeans.

No ripped, tight, torn, or sagging jeans



Spirit wear is a privilege & can be revoked. Clothing must be according to school code. Spirit wear order forms are available in the foyer and office.

***FREE “living the 7 habits” APP**

***Code – habits89**

Habit 5: Seek First to Understand, Then to Be Understood®

Listen before you talk.



DIRECTIONS:

“Seek First to Understand” - Bring hand up and place it behind one ear.

“Then to Be Understood” - Move hand to mouth.

CLASSROOM TREATS/SNACKS

Classroom treats may be brought in BUT—They must be store bought. No home kitchen items, please.

HEALTH POLICY

- MUST be free of fevers, vomiting and/or diarrhea for 24 hrs.
 - Running nose must be clear, not colorful. *If child seems sick, have them stay home.*
- Call absence in by 8:30 a.m.

SCHOOL CLOSINGS



AS SOON AS SCHOOL IS CLOSED IT WILL BE POSTED ON THE FACEBOOK PAGE AND ON THESE TELEVISION STATIONS AND ALSO ON THE RADIO STATIONS: 102.3FM & 1380AM.

****EVERYONE MUST BE BUZZED INTO THE SCHOOL BEFORE ENTERING****



1403 7th Street
Port Huron, MI
810-294-8040

MISSION STATEMENT

East Shore Leadership Academy, in pursuit of excellence, will develop future leaders through a strong academic foundation and the development of high moral character.